

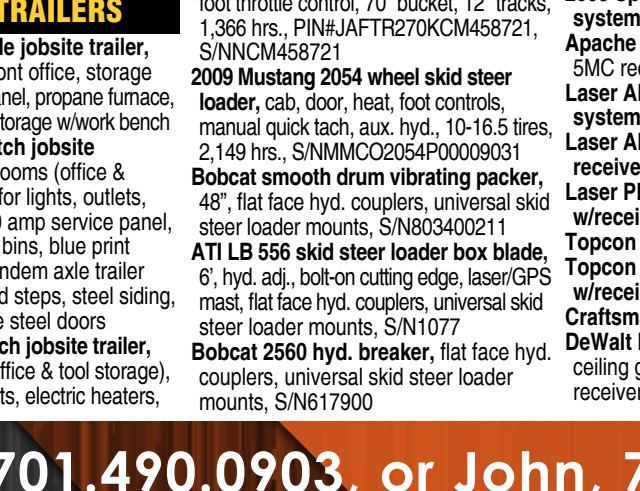
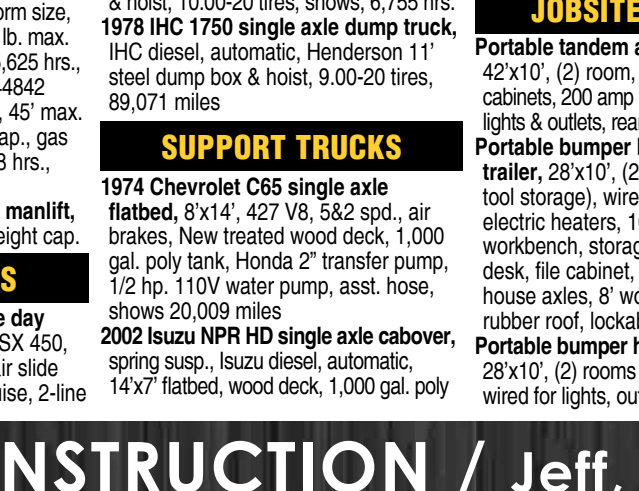
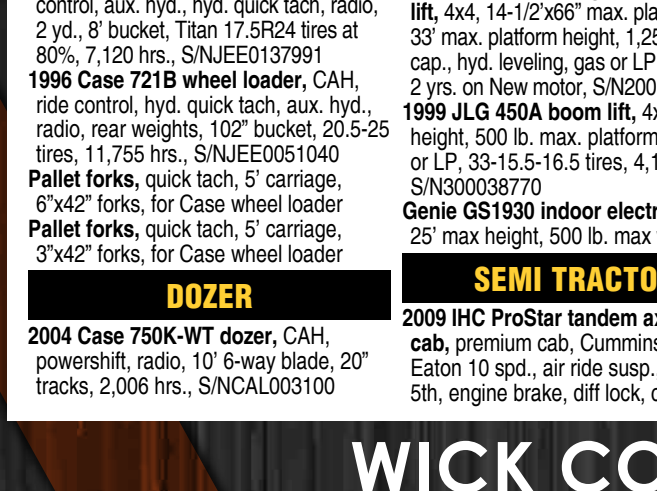
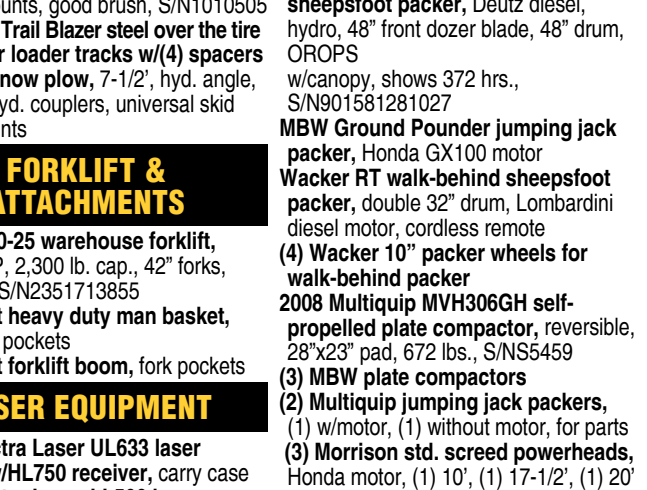
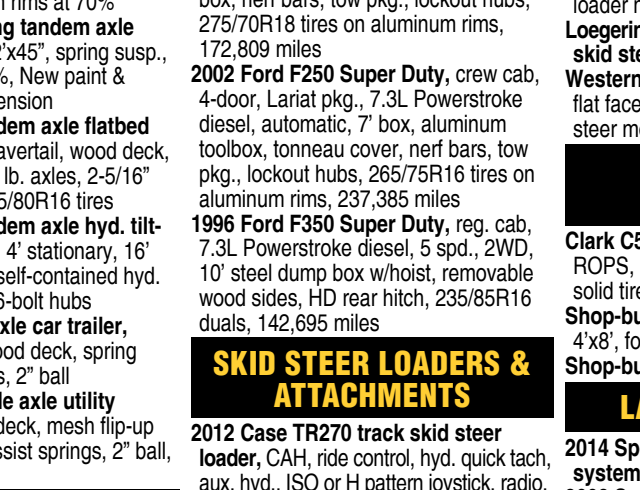
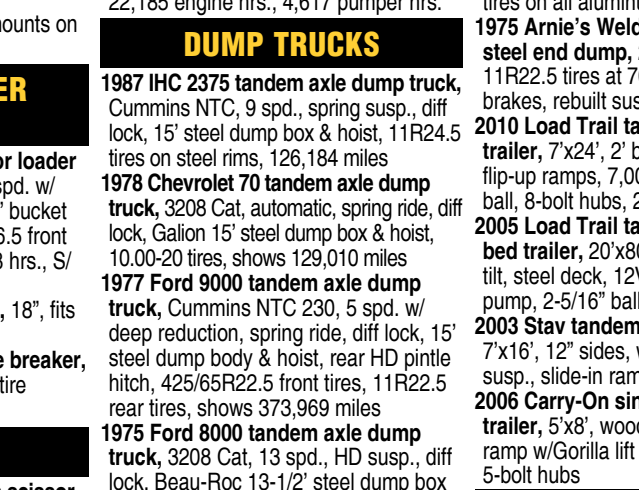
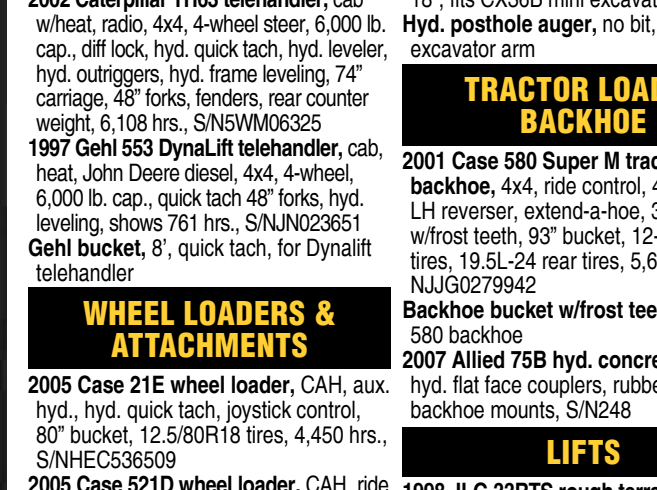
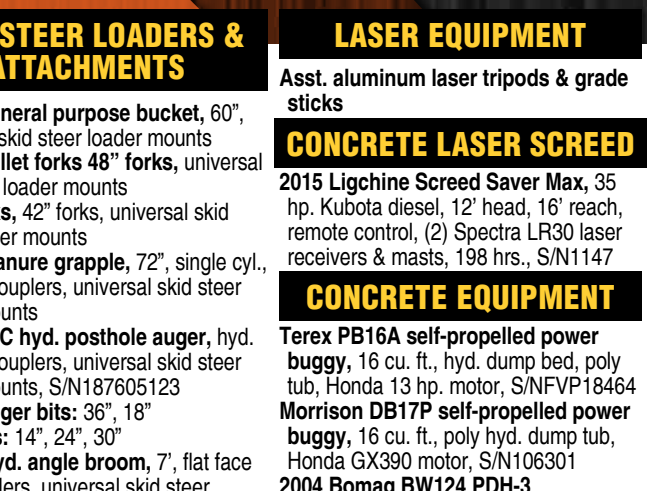
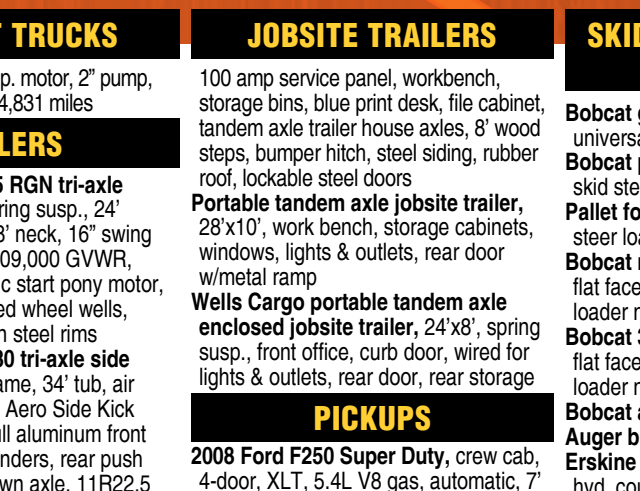
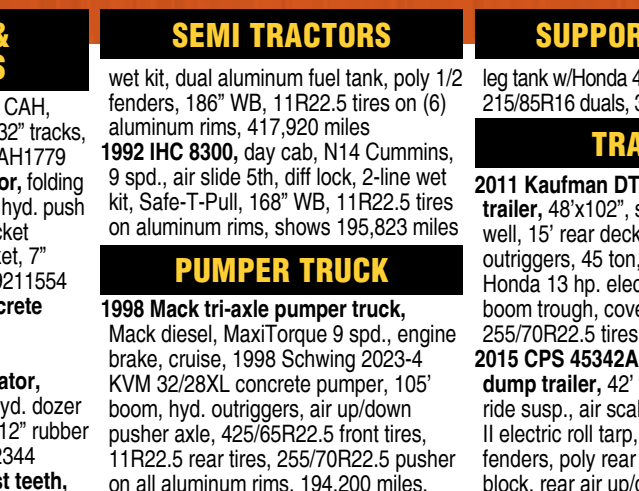
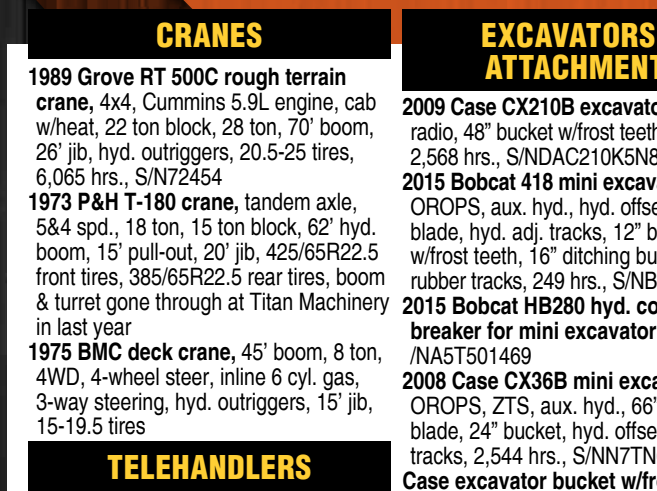
CONSTRUCTION RETIREMENT

AUCTION LOCATED: 1110 5th Ave NW, Valley City, ND

AUCTION

Thursday, August 16 | 9AM 2018

AUCTIONEER'S NOTE: Most items were purchased new and are job site ready. Major equipment begins selling at 10:00 AM. Live online bidding available on major equipment. Registration, terms, & details at SteffesGroup.com



CRANES

1989 Grove RT 500C rough terrain crane, 4x4, Cummins 5.9L engine, cab w/heat, 22 ton block, 28 ton, 70' boom, 26' jib, hyd. outriggers, 20.5-25 tires, 6,065 hrs., S/N72454
1973 P&H T-180 crane, tandem axle, 5.84 spd., 18 ton, 15 ton block, 62' hyd. boom, 15' dull-out, 20' jib, 425/65R22.5 front tires, 385/65R22.5 rear tires, boom & turret gone through at Titan Machinery in last year
1975 BMC deck crane, 45' boom, 8 ton, 4WD, 4-wheel steer, inline 6 cyl. gas, 3-way steering, hyd. outriggers, 15' jib, 15-19.5 tires

TELEHANDLERS

2002 Caterpillar TH63 telehandler, cab w/heat, radio, 4x4, 4-wheel steer, 6,000 lb. cap., diff lock, hyd. quick tach, hyd. leveler, hyd. outriggers, hyd. frame leveling, 74' carriage, 48' forks, fenders, rear counter weight, 6,108 hrs., S/N5VM06325
1997 Gehl 553 Dynalift telehandler, cab, heat, John Deere diesel, 4x4, 4-wheel, 6,000 lb. cap., quick tach 48' forks, hyd. leveling, shows 761 hrs., S/NJ023651
Gehl bucket, 8', quick tach, for Dynalift telehandler

WHEEL LOADERS & ATTACHMENTS

2005 Case 21E wheel loader, CAH, aux. hyd., hyd. quick tach, joystick control, 80' bucket, 12.5/80R18 tires, 4,450 hrs., S/NHEC536509
2005 Case 521D wheel loader, CAH, ride control, aux. hyd., hyd. quick tach, radio, 2 yd. 8' bucket, Titan 17.5R24 tires at 80%, 7,120 hrs., S/NJEE0137991
1996 Case 721B wheel loader, CAH, ride control, hyd. quick tach, aux. hyd., radio, rear weights, 102' bucket, 20.5-25 tires, 11,755 hrs., S/NJEE0051040
Pallet forks, quick tach, 5' carriage, 6"x42" forks, for Case wheel loader
Pallet forks, quick tach, 5' carriage, 3"x42" forks, for Case wheel loader

DOZER

2004 Case 750K-WT dozer, CAH, powershift, radio, 10' 6-way blade, 20' tracks, 2,006 hrs., S/NCAL003100

EXCAVATORS & ATTACHMENTS

2009 Case CX210B excavator, CAH, radio, 48' bucket w/frost teeth, 32" tracks, 2,568 hrs., S/NDAC210K5N8SAH1779
2015 Bobcat 418 mini excavator, folding OROPS, aux. hyd., hyd. offset, hyd. push blade, hyd. adj. tracks, 12' bucket w/frost teeth, 16" ditching bucket, 7" rubber tracks, 249 hrs., S/NB39211554
2015 Bobcat HB280 hyd. concrete breaker for mini excavator, /NA5T501469
2008 Case CX36B mini excavator, OROPS, ZTS, aux. hyd., 66' hyd. dozer blade, 24" bucket, hyd. offset, 12" rubber tracks, 2,544 hrs., S/NN7TN62344
Case excavator bucket w/frost teeth, 18", fits CX36B mini excavator
Hyd. posthole auger, no bit, mounts on excavator arm

TRACTOR LOADER BACKHOE

2001 Case 580 Super M tractor loader backhoe, 4x4, ride control, 4 spd. w/ LH reverser, extend-a-hoe, 30" bucket w/frost teeth, 93' bucket, 12-16.5 front tires, 19.5L-24 rear tires, 5,688 hrs., S/ NJG0279942
Backhoe bucket w/frost teeth, 18", fits 580 backhoe
2007 Allied 75B hyd. concrete breaker, hyd. flat face couplers, rubber tire backhoe mounts, S/N248

LIFTS

1998 JLG 33RTS rough terrain scissor lift, 4x4, 14-1/2"x66" max. platform size, 33' max. platform height, 1,250 lb. max. cap., hyd. leveling, gas or LP, 5,625 hrs., 2 yrs. on New motor, S/N200044842
1999 JLG 450A boom lift, 4x4, 45' max. height, 500 lb. max. platform cap., gas or LP, 33-15.5-16.5 tires, 4,118 hrs., S/N300038770
Genie GS1930 indoor electric manlift, 25' max height, 500 lb. max weight cap.

SEMI TRACTORS

2009 IHC ProStar tandem axle day cab, premium cab, Cummins ISX 450, Eaton 10 spd., air ride susp., air slide 5th, engine brake, diff lock, cruise, 2-line

SEMI TRACTORS

wet kit, dual aluminum fuel tank, poly 1/2 fenders, 186" WB, 11R22.5 tires on (6) aluminum rims, 417,920 miles
1992 IHC 8300, day cab, N14 Cummins, 9 spd., air slide 5th, diff lock, 2-line wet kit, Safe-T-Pull, 168" WB, 11R22.5 tires on aluminum rims, shows 195,823 miles

PUMPER TRUCK

1998 Mack tri-axle pumper truck, Mack diesel, MaxiTorque 9 spd., engine brake, cruise, 1998 Schwing 2023-4 KVM 32/28XL concrete pumper, 105' boom, hyd. outriggers, air up/down pusher axle, 425/65R22.5 front tires, 11R22.5 rear tires, 255/70R22.5 pusher on all aluminum rims, 194,200 miles, 22,185 engine hrs., 4,617 pumper hrs.

DUMP TRUCKS

1987 IHC 2375 tandem axle dump truck, Cummins NTC, 9 spd., spring susp., diff lock, 15' steel dump box & hoist, 11R24.5 tires on steel rims, 126,184 miles
1978 Chevrolet 70 tandem axle dump truck, 3208 Cat, automatic, spring ride, diff lock, Gallion 15' steel dump box & hoist, 10,000-20 tires, shows 129,010 miles
1977 Ford 9000 tandem axle dump truck, Cummins NTC 230, 5 spd. w/ deep reduction, spring ride, diff lock, 15' steel dump body & hoist, rear HD pintle hitch, 425/65R22.5 front tires, 11R22.5 rear tires, shows 373,969 miles
1975 Ford 8000 tandem axle dump truck, 3208 Cat, 13 spd., HD susp., diff lock, Beau-Roc 13-1/2' steel dump box & hoist, 10,000-20 tires, shows, 6,755 hrs.
1978 IHC 1750 single axle dump truck, IHC diesel, automatic, Henderson 11' steel dump box & hoist, 9,000-20 tires, 89,071 miles

SUPPORT TRUCKS

1974 Chevrolet C65 single axle flatbed, 8'x14', 427 V8, 5.82 spd., air brakes, New treated wood deck, 1,000 gal. poly tank, Honda 2" transfer pump, 1/2 hp. 110V water pump, ass. hose, shows 20,009 miles
2002 Isuzu NPR HD single axle cabover, spring susp., Isuzu diesel, automatic, 14'x7' flatbed, wood deck, 1,000 gal. poly

SUPPORT TRUCKS

leg tank w/Honda 4 hp. motor, 2' pump, 215/85R16 duals, 304,831 miles

TRAILERS

2011 Kaufman DT45 RGN tri-axle trailer, 48'x102', spring susp., 24' well, 15' rear deck, 8' neck, 16" swing outriggers, 45 ton, 109,000 GVWR, Honda 13 hp. electric start pony motor, boom trough, covered wheel wells, 255/70R22.5 tires on steel rims
2015 CPS 45342AZ30 tri-axle side dump trailer, 42' frame, 34' tub, air ride susp., air scale, Aero Side Kick II electric roll tarp, full aluminum front fenders, poly rear fenders, rear push block, rear air up/down axle, 11R22.5 tires on all aluminum rims at 70%
1975 Arnie's Welding tandem axle steel end dump, 22'x45', spring susp., 11R22.5 tires at 70%, New paint & brakes, rebuilt suspension

2010 Load Trail tandem axle flatbed trailer, 20'x80', 2' beavertail, wood deck, flip-up ramps, 7,000 lb. axles, 2-5/16" ball, 8-bolt hubs, 235/80R16 tires
2005 Load Trail tandem axle hyd. tilt-bed trailer, 20'x80', 4' stationary, 16" tilt, steel deck, 12V self-contained hyd. pump, 2-5/16" ball, 6-bolt hubs
2003 Stav tandem axle car trailer, 7'x16', 12' sides, wood deck, spring susp., slide-in ramps, 2" ball
2006 Carry-On single axle utility trailer, 5'x8', wood deck, mesh flip-up ramp w/Gorilla lift assist springs, 2" ball, 5-bolt hubs

JOBSITE TRAILERS

Portable tandem axle jobsite trailer, 42'x10', (2) room, front office, storage cabinets, 200 amp panel, propane furnace, lights & outlets, rear storage w/work bench
Portable bumper hitch jobsite trailer, 28'x10', (2) rooms (office & tool storage), wired for lights, outlets, electric heaters, rubber floor, lockable steel doors
Portable bumper hitch jobsite trailer, 28'x10', (2) rooms (office & tool storage), wired for lights, outlets, electric heaters,

JOBSITE TRAILERS

100 amp service panel, workbench, storage bins, blue print desk, file cabinet, tandem axle trailer house axles, 8' wood steps, bumper hitch, steel siding, rubber floor, lockable steel doors
Portable tandem axle jobsite trailer, 28'x10', (2) rooms (office & tool storage), wired for lights, outlets, electric heaters,

JOBSITE TRAILERS

2008 Ford F250 Super Duty, crew cab, 4-door, XLT, 5.4L V8 gas, automatic, 7' box, nerf bars, tow pkg., lockout hubs, 275/70R18 tires on aluminum rims, 172,809 miles
2002 Ford F350 Super Duty, crew cab, 4-door, Lariat pkg., 7.3L Powerstroke diesel, automatic, 7' box, aluminum toolbox, tonneau cover, nerf bars, tow pkg., lockout hubs, 285/75R16 tires on aluminum rims, 237,385 miles
1996 Ford F350 Super Duty, reg. cab, 7.3L Powerstroke diesel, 5 spd., 2WD, 10' steel dump box w/hoist, removable wood sides, HD rear hitch, 235/85R16 duals, 142,695 miles

PICKUPS

2012 Case TR270 track skid steer loader, CAH, ride control, hyd. quick tach, aux. hyd., ISO or pattern joystick, radio, foot throttle control, 70' bucket, 12' tracks, 1,366 hrs., PIN#JAFR270KCM458721, S/NNCM458721
2009 Mustang 2054 wheel skid steer loader, cab, door, heat, foot controls, manual quick tach, aux. hyd., 10-16.5 tires, 2,149 hrs., S/NNMCC02054P00009031
Bobcat smooth drum vibrating packer, 48', flat face hyd. couplers, universal skid steer loader mounts, S/N803400211
ATI LB 556 skid steer loader box blade, 6' hyd. adj., bolt-on cutting edge, laser/GPS mast, flat face hyd. couplers, universal skid steer loader mounts, S/N1077
Bobcat 2560 hyd. breaker, flat face hyd. couplers, universal skid steer loader mounts, S/N617900

SKID STEER LOADERS & ATTACHMENTS

Bobcat general purpose bucket, 60", universal skid steer loader mounts
Bobcat pallet forks 48" forks, universal skid steer loader mounts
Bobcat manure grapple, 72", single cyl., flat face couplers, universal skid steer loader mounts
Bobcat 30C hyd. posthole auger, hyd. flat face couplers, universal skid steer loader mounts, S/N187605123
Bobcat auger bits: 36", 18" Auger bits: 14", 24", 30"
Erskine hyd. angle broom, 7', flat face hyd. couplers, universal skid steer loader mounts, good brush, S/N1010505
Loeinger Trail Blazer steel over the tire skid steer loader tracks w/(4) spacers
Western snow plow, 7-1/2' hyd. angle, flat face hyd. couplers, universal skid steer mounts

SKID STEER LOADERS & ATTACHMENTS

Bobcat general purpose bucket, 60", universal skid steer loader mounts
Bobcat pallet forks 48" forks, universal skid steer loader mounts
Bobcat manure grapple, 72", single cyl., flat face couplers, universal skid steer loader mounts
Bobcat 30C hyd. posthole auger, hyd. flat face couplers, universal skid steer loader mounts, S/N187605123
Bobcat auger bits: 36", 18" Auger bits: 14", 24", 30"
Erskine hyd. angle broom, 7', flat face hyd. couplers, universal skid steer loader mounts, good brush, S/N1010505
Loeinger Trail Blazer steel over the tire skid steer loader tracks w/(4) spacers
Western snow plow, 7-1/2' hyd. angle, flat face hyd. couplers, universal skid steer mounts

FORKLIFT & ATTACHMENTS

Clark C500-25 warehouse forklift, ROPS, LP, 2,300 lb. cap., 42" forks, solid tire, S/N2351713855
Shop-built heavy duty man basket, 4'x8', fork pockets
Shop-built forklift boom, fork pockets

LASER EQUIPMENT

2014 Spectra Laser UL633 laser system w/HL750 receiver, carry case
2008 Spectra Laser LL500 laser system w/receiver, carry case
Apache 26 automatic blade control, 5MC receiver
Laser Alignment System LB10 laser system w/receiver, carry case
Laser Alignment System laser receiver, 360 degree, cab controls
Laser Plane L600 laser system w/receiver, carry case
Topcon GTS-2R digital transit
Topcon RL-H3CS rotating laser w/receiver, carry case
Craftsman transit w/carry case
DeWalt DW073 portable laser, cordless, ceiling grid, 18V w/charger, wall mounts, receiver, carry case

LASER EQUIPMENT

Asst. aluminum laser tripods & grade sticks
2015 Ligchine Screed Saver Max, 35 hp. Kubota diesel, 12' head, 16' reach, remote control, (2) Spectra LR30 laser receivers & masts, 198 hrs., S/N1147

CONCRETE EQUIPMENT

Terex PB16A self-propelled power buggy, 16 cu. ft., hyd. dump bed, poly tub, Honda 13 hp. motor, S/NFVP18464
Morrison DB17P self-propelled power buggy, 16 cu. ft., poly hyd. dump tub, Honda GX390 motor, S/N106301
2004 Bomag BW124 PDH-3 sheepsfoot packer, Deutz diesel, hyd. 48" front dozer blade, 48" drum, OROPS
w/canopy, shows 372 hrs., S/N901581281027

MBW Ground Pounder jumping jack packer, Honda GX100 motor
Wacker RT walk-behind sheepsfoot packer, double 32" drum, Lombardini diesel motor, cordless remote
(4) Wacker 10" packer wheels for walk-behind packer
2008 Multiquip MVH306GH self-propelled plate compactor, reversible, 28"x23" pad, 672 lbs., S/NS5459

(3) MBW plate compactors
(2) Multiquip jumping jack packers, (1) w/motor, (1) without motor, for parts
(3) Morrison std. screed powerheads, Honda motor, (1) 10', (1) 17-1/2', (1) 20'
(3) Morrison 10' std. screed sections
(3) Morrison 5' std. screed sections
(2) Morrison hyd. winch ends w/transport wheels
(2) Scream-O-Matic power screed heads, Honda motors
Edco CPM-8-9H walk-behind concrete floor scarifier, Honda GX 240 motor, S/N14364
Magnum Mini Mag walk-behind concrete saw, Honda 13 hp. motor
Arcet MC18 walk-behind concrete saw, 220V, 5 hp., 1 phase, electric motor
Max R515 cordless rebar tie gun, (2) batteries, charger, carry case

(3) Morrison std. screed powerheads, Honda motor, (1) 10', (1) 17-1/2', (1) 20'
(3) Morrison 10' std. screed sections
(3) Morrison 5' std. screed sections
(2) Morrison hyd. winch ends w/transport wheels
(2) Scream-O-Matic power screed heads, Honda motors
Edco CPM-8-9H walk-behind concrete floor scarifier, Honda GX 240 motor, S/N14364
Magnum Mini Mag walk-behind concrete saw, Honda 13 hp. motor
Arcet MC18 walk-behind concrete saw, 220V, 5 hp., 1 phase, electric motor
Max R515 cordless rebar tie gun, (2) batteries, charger, carry case

MORE ON BACK...

WICK CONSTRUCTION / Jeff, 701.490.0903, or John, 701.490.1461

or Todd Skaurud at Steffes Group, 701.237.9173 or 701.729.3644

SteffesGroup.com

Steffes Group, Inc., 2000 Main Avenue East, West Fargo, ND 58078 | 701.237.9173



TERMS: All items sold as is where is. Payment of cash or check must be made sale day before removal of items. Statements made auction day take precedence over all advertising. \$35 documentation fee applies to all titled vehicles. Titles will be mailed. Canadian buyers need a bank letter of credit to facilitate border transfer.

CONSTRUCTION RETIREMENT AUCTION

Thursday, August 16 | 9AM 2018

AUCTION LOCATED: 1110 5th Ave NW, Valley City, ND

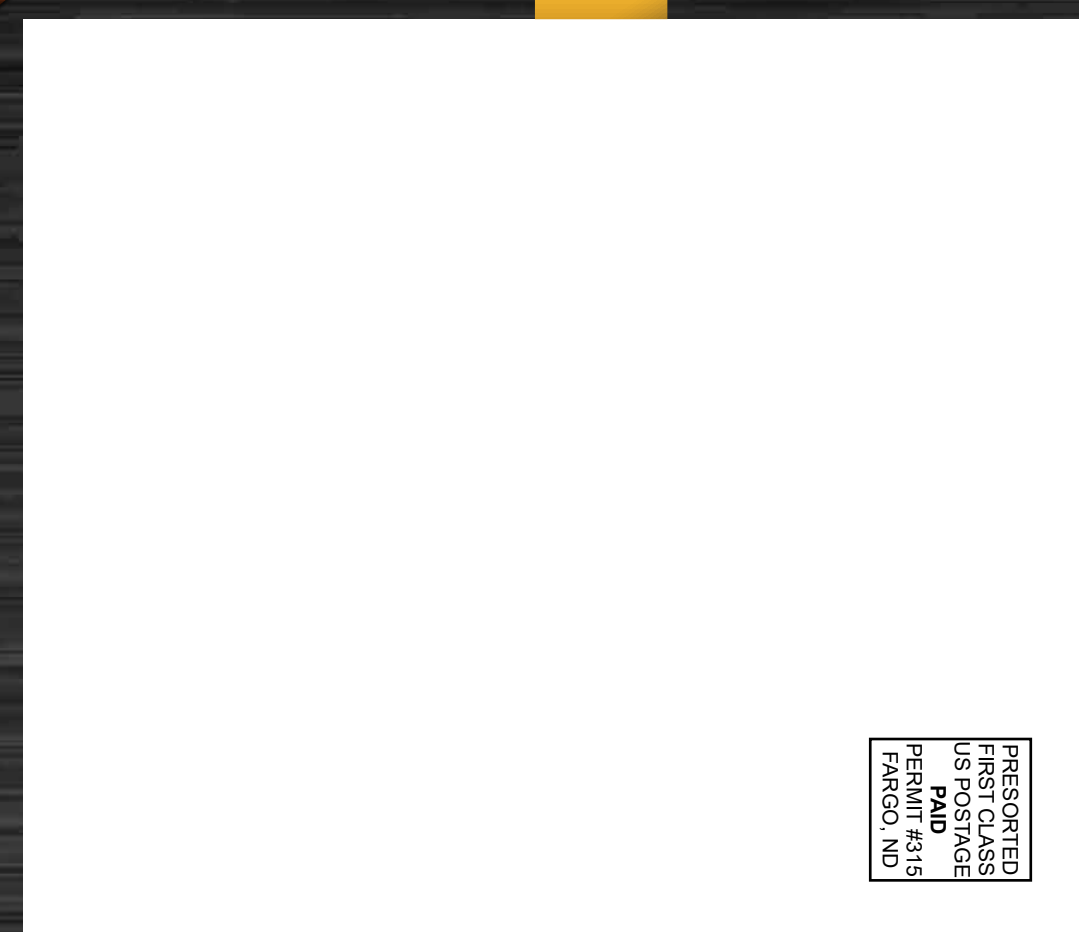


Thursday, August 16 | 9AM 2018



CONSTRUCTION RETIREMENT AUCTION

Steffes Group, Inc.
2000 Main Avenue East
West Fargo, ND 58078-2210

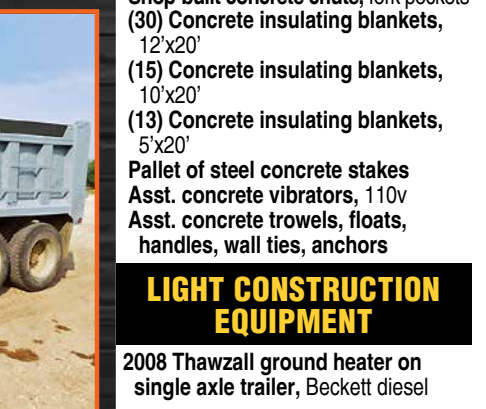


PRESORTED
FIRST CLASS
US POSTAGE
PAID
PERMIT #4315
FARGO, ND

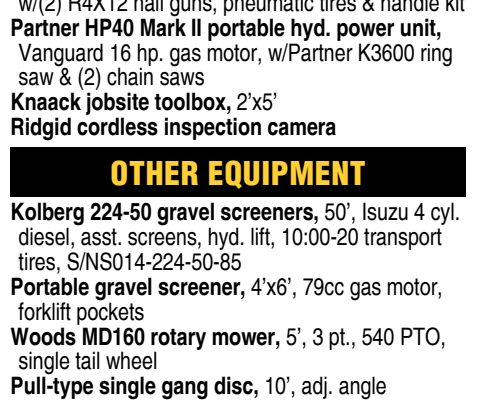
CONCRETE EQUIPMENT
Max RB397 cordless rebar tie gun, (2) batteries, charger, carry case
Max RB650A cordless rebar tie gun, (2) batteries, charger, carry case
(3) MBW power trowels, 48", (1) Honda motor, (2) Briggs & Stratton motors
MBW power trowel, 42", Honda motor
Whiteman edging power trowel, 24"
Aerometals concrete bucket, 3 yd.
Concrete bucket, 1 yd.
Asst. hose & pneumatic jack hammers
Asst. form lumber: 2x4s, 2x6s, 2x12s
Asst. rebar: steel tie wire, steel studs & track, red iron, angle iron



CONCRETE EQUIPMENT
Bosch 11245EUS rotary hammer drill, 110V, asst. bits & case
Brute jack hammer, 110V, w/asst. bits & cart
Hilti TE70 electric hammer drill, 110V, asst. bits & case
MK Manta concrete core drill, asst. sized drill bits
Symons concrete forms to include: (177) 24"x4" panels, asst. 4" filler panels & corners, 5" panels & corners, (42) 24"x8" panels & (8) 4" fillers, asst. whaler brackets, pins, scaffold brackets, tumbuckles & misc.
Dee steel concrete forms: (8) 6"x10", (8) 12"x10", (8) curved edge curb forms
1982 Shop-built tandem axle concrete form trailer, 6'x12', spring susp., 6-bolt hubs
Shop-built concrete chute, fork pockets
(30) Concrete insulating blankets, 12"x20'
(15) Concrete insulating blankets, 10"x20'
(13) Concrete insulating blankets, 5"x20'
Pallet of steel concrete stakes
Asst. concrete vibrators, 110v
Asst. concrete trowels, floats, handles, wall ties, anchors

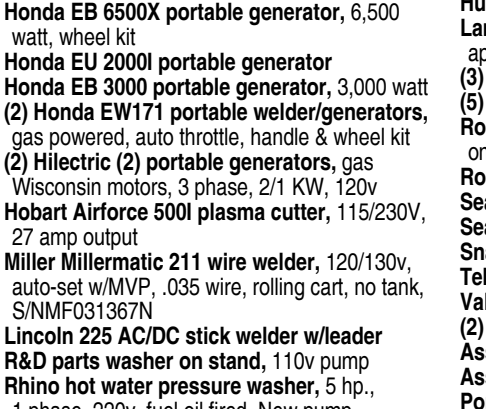


LIGHT CONSTRUCTION EQUIPMENT
fired boiler, 5-way manifold, hose reel w/hose, forklift pockets, 9,590 hrs., S/N12076AECG535
2011 Wacker Neuson LTN6 portable light tower, 6KVA 1 phase, Kohler diesel motor, 794 hrs., S/N5XFLN0512BN001068
Ingersoll Rand 175 trailer-mounted air compressor, 175 CFM, Deutz diesel motor, shows 318 hrs., S/N154377U86953
ICG OHV #500 construction heater, propane or natural gas, 450,000 BTU, 110V fan, indirect fired, S/N4110395PN
Hilti portable gas air compressor, Honda 11 hp. electric start motor, 80 gal. tank, 2 cyl. compressor, w/(2) R4X12 nail guns, pneumatic tires & handle kit
Partner HP40 Mark II portable hyd. power unit, Vanguard 16 hp. gas motor, w/Partner K3600 ring saw & (2) chain saws
Knaack jobsite toolbox, 2'x5'
Ridgid cordless inspection camera

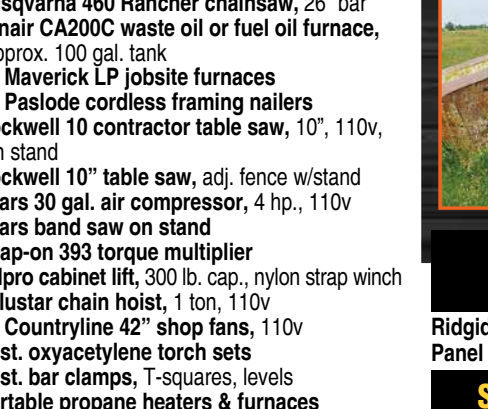


OTHER EQUIPMENT
Posthole auger, 2-man, 7" bit, Briggs & Stratton 5 hp. motor
(2) Fiberglass man buckets, off bucket truck

SCAFFOLDING
(45) 5'x5' scaffold uprights w/cross braces
(8) 5'x2' scaffold sections
(4) 3'x2' scaffold sections
(6) 5'x2' scaffold guard rail sections
(4) Werner aluminum scaffold planks, 7'x19"
Asst. caster wheels, jacks & feet for scaffolding



GENERATORS & SHOP EQUIPMENT
Honda EB 6500X portable generator, 6,500 watt, wheel kit
Honda EU 2000I portable generator
Honda EB 3000 portable generator, 3,000 watt
(2) Honda EW171 portable welder/generators, gas powered, auto throttle, handle & wheel kit
(2) Hiletric (2) portable generators, gas Wisconsin motors, 3 phase, 2/1 KW, 120v
Hobart Airforce 500I plasma cutter, 115/230V, 27 amp output
Miller Millermatic 211 wire welder, 120/130v, auto-set w/MVP, .035 wire, rolling cart, no tank, S/NMF031367N
Lincoln 225 AC/DC stick welder w/leader
R&D parts washer on stand, 110v pump
Rhino hot water pressure washer, 5 hp., 1 phase, 220v, fuel oil fired, New pump
Buds Service 4-compartment oil bar, (2) 120 gal., (2) 70 gal. storage compartment
(2) Husqvarna K760 gas cut-off saws, abrasive bits
Jet HVBS-7M horizontal metal band saw, 3/4 hp. 1 phase, liquid coolant pump
Carolina HD10 horizontal metal band saw, on rolling cart, S/NHD1017965
Cat electric pallet jack w/charger, No battery
Chicago electric sliding miter saw on portable stand
DeWalt sliding miter saw, 12"
(2) DeWalt compound miter saws, 12"
DeWalt radial arm saw on stand, 110v
Cherry picker
Emglo AirMate air compressor, 6 gal.
Husqvarna 440 chainsaw, 16" bar



GENERATORS & SHOP EQUIPMENT
Husqvarna 460 Rancher chainsaw, 26" bar
Lanair CA200C waste oil or fuel oil furnace, approx. 100 gal. tank
(3) Maverick LP jobsite furnaces
(5) Paslode cordless framing nailers
Rockwell 10 contractor table saw, 10", 110v, on stand
Rockwell 10" table saw, adj. fence w/stand
Sears 30 gal. air compressor, 4 hp., 110v
Sears band saw on stand
Snap-on 393 torque multiplier
Telpro cabinet lift, 300 lb. cap., nylon strap winch
Valustar chain hoist, 1 ton, 110v
(2) Countryline 42" shop fans, 110v
Asst. oxyacetylene torch sets
Asst. bar clamps, T-squares, levels
Portable propane heaters & furnaces
(2) Lincoln cordless grease guns w/batteries & charger, carry case
Asst. mop buckets, fans, space heaters, lights
Asst. electrical cords, welding heads, extension cords
Asst. caulking guns, hyd. bottle jacks, clevises & pins
Asst. metal chop saws, power drills, screw guns, fiberglass ladders, dollies, safety equipment, hand tools, wrenches
Asst. hardware, fasteners, nails, screws, brackets, nuts, bolts, plastic, tarps
Asst. propane hose, torches, tanks
Asst. shovels, scrapers, brooms, etc.
Asst. handheld cut off saws, 110v
Asst. air nailers, grinders, shears, sanders, routers, saws, hammer drills, drills, sawzalls



GENERATORS & SHOP EQUIPMENT
Ridgid & Ryobi planers, 110v
Panel lift, sheet rock lift

SUPPORT ITEMS & MISC.
Delta "L" shape fuel service tank, 105 gal., Fill-Rite pump, 15 gpm, 12v
Steel fuel service tank, 50 gal., Fill-Rite pump, 15 gpm, 12v
250 gal. propane tank
Gorman Rupp aluminum water pump, 3", 3 hp. Briggs & Stratton motor
Asst. cable chokers & lifting slings
Asst. jobsite temporary lighting
HD machinery mover dollies
(10) Wheelbarrows
Asst. chain link fence & posts, road signs, barricades & fence posts
Asst. cable, water hose
Maytag Neptune electric washer & dryer
Star popcorn maker on cart



WICK CONSTRUCTION / Jeff, 701.490.0903, or John, 701.490.1461
or Tadd Skaurud at Steffes Group, 701.237.9173 or 701.729.3644

